



# Performance Edition

## Sustainable Performance Management

### i-nexus Performance Edition

Sustainable Performance Management is about getting a few things right:

- Making performance management a review cycle
- Aligning actions and measurements
- Tacking impact not just progress

i-nexus understand the value of aligning measurement and action and has developed it's market leading software to offer an integrated performance management solution based on the scorecard management framework.

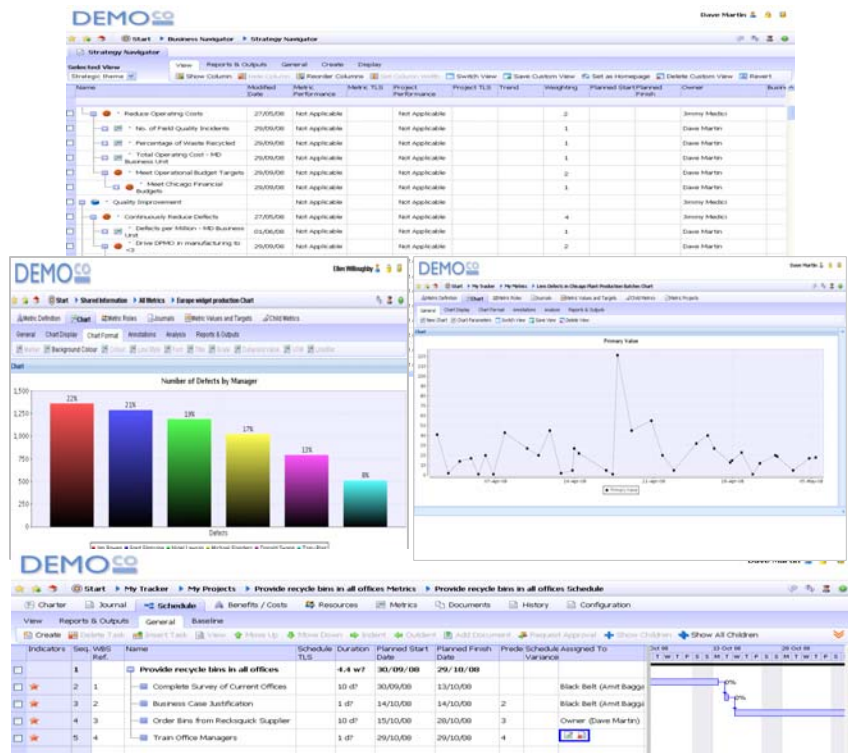
#### Key Features

- Create Scorecards
- Track Performance
- Analyze KPI/Metrics
- Deploy Initiatives
- Control Programs/Portfolios
- Analyze and Report
- Alerts and Auto-Notifications
- Deployed via SaaS or in-house

#### Empower Performance:

- Establish key performance indicators.
- Measure and pinpoint gaps in performance.
- Scope improvements and drive actions to completion.
- Monitor, analyze and report performance.
- Make performance management "business-as-usual".

#### Take Control of Your Performance



### i-nexus Improved Performance. Delivered

i-nexus provides a fully integrated suite of applications for the Corporate Performance Management, Project Portfolio Management and Business Process Management capabilities necessary to effectively plan and execute organizational strategy. This is backed by powerful business intelligence capabilities to deliver executive and senior management reports on demand, in real-time or on a scheduled basis. Client companies include organizations such as Pfizer, Harley Davidson, Staples, ALSTOM, AREVA, Dresser Inc., Centrica, Nestle and T-Mobile.

i-nexus headquarters is in Coventry, UK, with regional offices in Europe and North America and resellers supporting Asia, Australia, New Zealand, South America and the Caribbean. i-nexus applications are driving benefits globally for over 50,000 people, managing over 20,000 improvement initiatives and generating over 5 Billion in financial benefits. i-nexus is used in over 100 countries and in 10 languages.